

Flute

# SWOBDA JH Audition Scales

Concert G Scale

Musical notation for the Concert G Scale in 4/4 time. The scale starts on G4 and ascends to G5, then descends back to G4. The notes are G, A, B, C, D, E, F#, G, F#, E, D, C, B, A, G.

Concert C Scale

Musical notation for the Concert C Scale in 4/4 time. The scale starts on C4 and ascends to C5, then descends back to C4. The notes are C, D, E, F, G, A, B, C, B, A, G, F, E, D, C.

Concert F Scale

Musical notation for the Concert F Scale in 4/4 time. The scale starts on F3 and ascends to F4, then descends back to F3. The notes are F, G, A, Bb, C, D, E, F, E, D, C, Bb, A, G, F.

Concert Bb Scale

Musical notation for the Concert Bb Scale in 4/4 time. The scale starts on Bb3 and ascends to Bb4, then descends back to Bb3. The notes are Bb, C, D, Eb, F, G, Ab, Bb, Ab, G, F, Eb, D, C, Bb.

Concert Eb Scale

Musical notation for the Concert Eb Scale in 4/4 time. The scale starts on Eb3 and ascends to Eb4, then descends back to Eb3. The notes are Eb, F, G, Ab, Bb, C, D, Eb, D, C, Bb, Ab, G, F, Eb.

Concert Ab Scale

Musical notation for the Concert Ab Scale in 4/4 time. The scale starts on Ab3 and ascends to Ab4, then descends back to Ab3. The notes are Ab, Bb, C, Db, Eb, F, G, Ab, G, F, Eb, Db, C, Bb, Ab.

Concert Db Scale

Musical notation for the Concert Db Scale in 4/4 time. The scale starts on Db3 and ascends to Db4, then descends back to Db3. The notes are Db, Eb, F, G, Ab, Bb, C, Db, C, Bb, Ab, G, F, Eb, Db.

Concert Gb Scale

Musical notation for the Concert Gb Scale in 4/4 time. The scale starts on Gb3 and ascends to Gb4, then descends back to Gb3. The notes are Gb, Ab, Bb, C, Db, Eb, F, Gb, F, Eb, Db, C, Bb, Ab, Gb.

Chromatic Scale

Musical notation for the Chromatic Scale in 4/4 time. The scale consists of two lines of chromatic movement. The first line ascends from G4 to G5, and the second line descends from G5 to G4. The notes are G, G#, A, Ab, Bb, B, C, C#, D, Db, Eb, E, F, F#, G.

Oboe

# SWOBDA JH Audition Scales

Concert G Scale



Concert C Scale



Concert F Scale



Concert Bb Scale



Concert Eb Scale



Concert Ab Scale



Concert Db Scale



Concert Gb Scale



Chromatic Scale



Bassoon

# SWOBDA JH Audition Scales

Concert G Scale

Musical notation for the Concert G Scale in bass clef, 4/4 time, key of G major. The scale is written in a single line, starting on G2 and ascending to G3, then descending back to G2. The notes are G, A, B, C, D, E, F#, G, F#, E, D, C, B, A, G.

Concert C Scale

Musical notation for the Concert C Scale in bass clef, 4/4 time, key of C major. The scale is written in a single line, starting on C2 and ascending to C3, then descending back to C2. The notes are C, D, E, F, G, A, B, C, B, A, G, F, E, D, C.

Concert F Scale

Musical notation for the Concert F Scale in bass clef, 4/4 time, key of F major. The scale is written in a single line, starting on F2 and ascending to F3, then descending back to F2. The notes are F, G, A, Bb, C, D, E, F, E, D, C, Bb, A, G, F.

Concert Bb Scale

Musical notation for the Concert Bb Scale in bass clef, 4/4 time, key of Bb major. The scale is written in a single line, starting on Bb2 and ascending to Bb3, then descending back to Bb2. The notes are Bb, C, D, Eb, F, G, Ab, Bb, Ab, G, F, Eb, D, C, Bb.

Concert Eb Scale

Musical notation for the Concert Eb Scale in bass clef, 4/4 time, key of Eb major. The scale is written in a single line, starting on Eb2 and ascending to Eb3, then descending back to Eb2. The notes are Eb, F, G, Ab, Bb, C, Db, Eb, Db, C, Bb, Ab, G, F, Eb.

Concert Ab Scale

Musical notation for the Concert Ab Scale in bass clef, 4/4 time, key of Ab major. The scale is written in a single line, starting on Ab2 and ascending to Ab3, then descending back to Ab2. The notes are Ab, Bb, C, Db, Eb, F, Gb, Ab, Gb, F, Eb, Db, C, Bb, Ab.

Concert Db Scale

Musical notation for the Concert Db Scale in bass clef, 4/4 time, key of Db major. The scale is written in a single line, starting on Db2 and ascending to Db3, then descending back to Db2. The notes are Db, Eb, F, Gb, Ab, Bb, C, Db, C, Bb, Ab, Gb, F, Eb, Db.

Concert Gb Scale

Musical notation for the Concert Gb Scale in bass clef, 4/4 time, key of Gb major. The scale is written in a single line, starting on Gb2 and ascending to Gb3, then descending back to Gb2. The notes are Gb, Ab, Bb, C, Db, Eb, F, Gb, F, Eb, Db, C, Bb, Ab, Gb.

Chromatic Scale

Musical notation for the Chromatic Scale in bass clef, 3/4 time, key of C major. The scale is written in two lines, starting on C2 and ascending to C3, then descending back to C2. The notes are C, C#, D, D#, E, E#, F, F#, G, G#, A, A#, B, B#, C.

Clarinet in B $\flat$

# SWOBDA JH Audition Scales

Concert G Scale

Musical notation for the Concert G Scale in 4/4 time. The key signature has two sharps (F# and C#). The scale is written in treble clef and consists of eight measures: four ascending and four descending, ending with a whole rest.

Concert C Scale

Musical notation for the Concert C Scale in 4/4 time. The key signature has two sharps (F# and C#). The scale is written in treble clef and consists of eight measures: four ascending and four descending, ending with a whole rest.

Concert F Scale

Musical notation for the Concert F Scale in 4/4 time. The key signature has one sharp (F#). The scale is written in treble clef and consists of eight measures: four ascending and four descending, ending with a whole rest.

Concert B $\flat$  Scale

Musical notation for the Concert B $\flat$  Scale in 4/4 time. The key signature has one flat (B $\flat$ ). The scale is written in treble clef and consists of eight measures: four ascending and four descending, ending with a whole rest.

Concert E $\flat$  Scale

Musical notation for the Concert E $\flat$  Scale in 4/4 time. The key signature has two flats (B $\flat$  and E $\flat$ ). The scale is written in treble clef and consists of eight measures: four ascending and four descending, ending with a whole rest.

Concert A $\flat$  Scale

Musical notation for the Concert A $\flat$  Scale in 4/4 time. The key signature has three flats (B $\flat$ , E $\flat$ , and A $\flat$ ). The scale is written in treble clef and consists of eight measures: four ascending and four descending, ending with a whole rest.

Concert D $\flat$  Scale

Musical notation for the Concert D $\flat$  Scale in 4/4 time. The key signature has four flats (B $\flat$ , E $\flat$ , A $\flat$ , and D $\flat$ ). The scale is written in treble clef and consists of eight measures: four ascending and four descending, ending with a whole rest.

Concert G $\flat$  Scale

Musical notation for the Concert G $\flat$  Scale in 4/4 time. The key signature has five flats (B $\flat$ , E $\flat$ , A $\flat$ , D $\flat$ , and G $\flat$ ). The scale is written in treble clef and consists of eight measures: four ascending and four descending, ending with a whole rest.

Chromatic Scale

Musical notation for the Chromatic Scale in 3/4 time. The scale is written in treble clef and consists of two lines of four measures each. The first line is ascending and the second line is descending, with each measure containing a single chromatic step.

Bass Clarinet in B $\flat$

# SWOBDA JH Audition Scales

Concert G Scale

Musical notation for the Concert G Scale in 4/4 time. The key signature has two sharps (F# and C#). The scale is written in a single line of music, starting on G4 and ending on G5. The notes are: G4, A4, B4, C5, D5, E5, F#5, G5, F#5, E5, D5, C5, B4, A4, G4. The piece concludes with a double bar line.

Concert C Scale

Musical notation for the Concert C Scale in 4/4 time. The key signature has two sharps (F# and C#). The scale is written in a single line of music, starting on C4 and ending on C5. The notes are: C4, D4, E4, F#4, G4, A4, B4, C5, B4, A4, G4, F#4, E4, D4, C4. The piece concludes with a double bar line.

Concert F Scale

Musical notation for the Concert F Scale in 4/4 time. The key signature has one sharp (F#). The scale is written in a single line of music, starting on F4 and ending on F5. The notes are: F4, G4, A4, B4, C5, D5, E5, F#5, G5, F#5, E5, D5, C5, B4, A4, F4. The piece concludes with a double bar line.

Concert B $\flat$  Scale

Musical notation for the Concert B-flat Scale in 4/4 time. The key signature has no sharps or flats. The scale is written in a single line of music, starting on B3 and ending on B4. The notes are: B3, C4, D4, E4, F4, G4, A4, B4, A4, G4, F4, E4, D4, C4, B3. The piece concludes with a double bar line.

Concert E $\flat$  Scale

Musical notation for the Concert E-flat Scale in 4/4 time. The key signature has one flat (Bb). The scale is written in a single line of music, starting on E3 and ending on E4. The notes are: E3, F3, G3, Ab3, Bb3, C4, D4, E4, D4, C4, Bb3, Ab3, G3, F3, E3. The piece concludes with a double bar line.

Concert A $\flat$  Scale

Musical notation for the Concert A-flat Scale in 4/4 time. The key signature has two flats (Bb and Eb). The scale is written in a single line of music, starting on A2 and ending on A3. The notes are: A2, B2, C3, Db3, Eb3, F3, G3, A3, G3, F3, Eb3, Db3, C3, B2, A2. The piece concludes with a double bar line.

Concert D $\flat$  Scale

Musical notation for the Concert D-flat Scale in 4/4 time. The key signature has three flats (Bb, Eb, and Ab). The scale is written in a single line of music, starting on D2 and ending on D3. The notes are: D2, E2, F2, Gb2, Ab2, Bb2, C3, D3, C3, Bb2, Ab2, Gb2, F2, E2, D2. The piece concludes with a double bar line.

Concert G $\flat$  Scale

Musical notation for the Concert G-flat Scale in 4/4 time. The key signature has four flats (Bb, Eb, Ab, and Db). The scale is written in a single line of music, starting on G1 and ending on G2. The notes are: G1, A1, B1, Cb2, Db2, Eb2, F2, G2, F2, Eb2, Db2, Cb2, B1, A1, G1. The piece concludes with a double bar line.

Chromatic Scale

Musical notation for the Chromatic Scale in 3/4 time. The scale is written in a single line of music, starting on C4 and ending on C5. The notes are: C4, C#4, D4, D#4, E4, E#4, F4, F#4, G4, G#4, A4, A#4, B4, B#4, C5. The piece concludes with a double bar line.

# SWOBDA JH Audition Scales

## Alto and Contra-Alto Clarinet

Concert G Scale



Concert C Scale



Concert F Scale



Concert Bb Scale



Concert Eb Scale



Concert Ab Scale



Concert Db Scale



Concert Gb Scale



Chromatic Scale



# SWOBDA JH Audition Scales

## Alto & Bari Saxophone

### Concert G Scale



### Concert C Scale



### Concert F Scale



### Concert Bb Scale



### Concert Eb Scale



### Concert Ab Scale



### Concert Db Scale



### Concert Gb Scale



### Chromatic Scale



# SWOBDA JH Audition Scales

## Tenor Saxophone

### Concert G Scale



### Concert C Scale



### Concert F Scale



### Concert Bb Scale



### Concert Eb Scale



### Concert Ab Scale



### Concert Db Scale



### Concert Gb Scale



### Chromatic Scale





# SWOBDA JH Audition Scales

Trumpet & Baritone TC

Concert G Scale



Concert C Scale



Concert F Scale



Concert Bb Scale



Concert Eb Scale



Concert Ab Scale



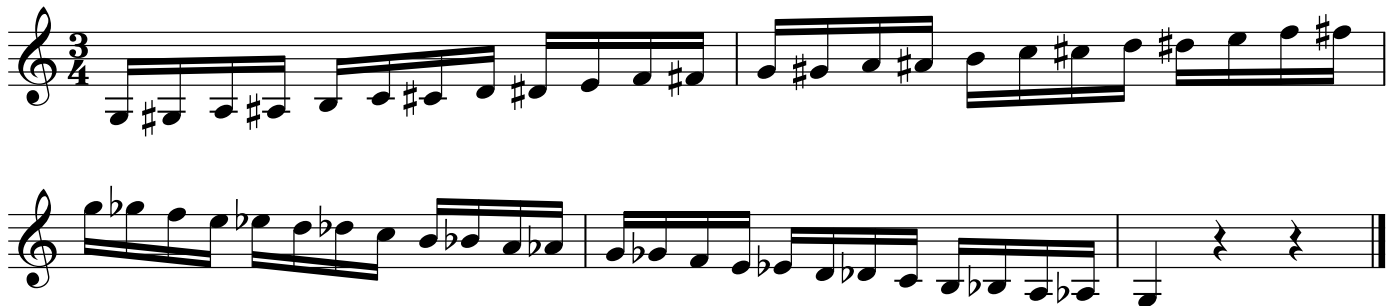
Concert Db Scale



Concert Gb Scale



Chromatic Scale



Horn in F

# SWOBDA JH Audition Scales

Concert G Scale

Musical notation for the Concert G Scale in 4/4 time. The scale is written in treble clef with a key signature of one sharp (F#). It consists of an ascending eighth-note scale from G4 to G5, followed by a descending eighth-note scale from G5 to G4, and ends with a whole rest.

Concert C Scale

Musical notation for the Concert C Scale in 4/4 time. The scale is written in treble clef with a key signature of one sharp (F#). It consists of an ascending eighth-note scale from C4 to C5, followed by a descending eighth-note scale from C5 to C4, and ends with a whole rest.

Concert F Scale

Musical notation for the Concert F Scale in 4/4 time. The scale is written in treble clef with a key signature of one sharp (F#). It consists of an ascending eighth-note scale from F4 to F5, followed by a descending eighth-note scale from F5 to F4, and ends with a whole rest.

Concert Bb Scale

Musical notation for the Concert Bb Scale in 4/4 time. The scale is written in treble clef with a key signature of two flats (Bb). It consists of an ascending eighth-note scale from Bb4 to Bb5, followed by a descending eighth-note scale from Bb5 to Bb4, and ends with a whole rest.

Concert Eb Scale

Musical notation for the Concert Eb Scale in 4/4 time. The scale is written in treble clef with a key signature of three flats (Eb). It consists of an ascending eighth-note scale from Eb4 to Eb5, followed by a descending eighth-note scale from Eb5 to Eb4, and ends with a whole rest.

Concert Ab Scale

Musical notation for the Concert Ab Scale in 4/4 time. The scale is written in treble clef with a key signature of four flats (Ab). It consists of an ascending eighth-note scale from Ab4 to Ab5, followed by a descending eighth-note scale from Ab5 to Ab4, and ends with a whole rest.

Concert Db Scale

Musical notation for the Concert Db Scale in 4/4 time. The scale is written in treble clef with a key signature of five flats (Db). It consists of an ascending eighth-note scale from Db4 to Db5, followed by a descending eighth-note scale from Db5 to Db4, and ends with a whole rest.

Concert Gb Scale

Musical notation for the Concert Gb Scale in 4/4 time. The scale is written in treble clef with a key signature of five flats (Gb). It consists of an ascending eighth-note scale from Gb4 to Gb5, followed by a descending eighth-note scale from Gb5 to Gb4, and ends with a whole rest.

Chromatic Scale

Musical notation for the Chromatic Scale in 4/4 time. The scale is written in treble clef with a key signature of five flats (Gb). It consists of a chromatic scale starting on Gb4, ascending and then descending through all twelve chromatic steps, and ending with a whole rest.

# SWOBDA JH Audition Scales

Trombone, Baritone B.C.

Concert G Scale



Concert C Scale



Concert F Scale



Concert Bb Scale



Concert Eb Scale



Concert Ab Scale



Concert Db Scale



Concert Gb Scale



Chromatic Scale



Tuba

# SWOBDA JH Audition Scales

Concert G Scale

Musical notation for the Concert G Scale in 4/4 time, bass clef, with one sharp (F#). The scale is written in two lines: the first line shows the ascending scale (G2, A2, B2, C3, D3, E3, F#3, G3), and the second line shows the descending scale (F#3, E3, D3, C3, B2, A2, G2). The piece concludes with a whole rest.

Concert C Scale

Musical notation for the Concert C Scale in 4/4 time, bass clef, with no sharps or flats. The scale is written in two lines: the first line shows the ascending scale (C2, D2, E2, F2, G2, A2, B2, C3), and the second line shows the descending scale (C3, B2, A2, G2, F2, E2, D2, C2). The piece concludes with a whole rest.

Concert F Scale

Musical notation for the Concert F Scale in 4/4 time, bass clef, with one flat (Bb). The scale is written in two lines: the first line shows the ascending scale (F2, G2, A2, Bb2, C3, D3, E3, F3), and the second line shows the descending scale (F3, E3, D3, C3, Bb2, A2, G2, F2). The piece concludes with a whole rest.

Concert Bb Scale

Musical notation for the Concert Bb Scale in 4/4 time, bass clef, with two flats (Bb, Fb). The scale is written in two lines: the first line shows the ascending scale (Bb2, C3, D3, Eb3, F3, G3, Ab3, Bb3), and the second line shows the descending scale (Bb3, Ab3, G3, F3, Eb3, D3, C3, Bb2). The piece concludes with a whole rest.

Concert Eb Scale

Musical notation for the Concert Eb Scale in 4/4 time, bass clef, with three flats (Bb, Fb, Cb). The scale is written in two lines: the first line shows the ascending scale (Eb2, F2, G2, Ab2, Bb2, Cb3, D3, Eb3), and the second line shows the descending scale (Eb3, D3, Cb3, Bb2, Ab2, G2, F2, Eb2). The piece concludes with a whole rest.

Concert Ab Scale

Musical notation for the Concert Ab Scale in 4/4 time, bass clef, with four flats (Bb, Fb, Cb, Gb). The scale is written in two lines: the first line shows the ascending scale (Ab2, Bb2, Cb3, Db3, Eb3, Fb3, Gb3, Ab3), and the second line shows the descending scale (Ab3, Gb3, Fb3, Eb3, Db3, Cb3, Bb2, Ab2). The piece concludes with a whole rest.

Concert Db Scale

Musical notation for the Concert Db Scale in 4/4 time, bass clef, with five flats (Bb, Fb, Cb, Gb, Db). The scale is written in two lines: the first line shows the ascending scale (Db2, Eb2, Fb2, Gb2, Ab2, Bb2, Cb3, Db3), and the second line shows the descending scale (Db3, Cb3, Bb2, Ab2, Gb2, Fb2, Eb2, Db2). The piece concludes with a whole rest.

Concert Gb Scale

Musical notation for the Concert Gb Scale in 4/4 time, bass clef, with six flats (Bb, Fb, Cb, Gb, Db, Ab). The scale is written in two lines: the first line shows the ascending scale (Gb2, Ab2, Bb2, Cb3, Db3, Eb3, Fb3, Gb3), and the second line shows the descending scale (Gb3, Fb3, Eb3, Db3, Cb3, Bb2, Ab2, Gb2). The piece concludes with a whole rest.

Chromatic Scale

Musical notation for the Chromatic Scale in 4/4 time, bass clef. The scale is written in two lines: the first line shows the ascending chromatic scale (C2, C#2, D2, D#2, E2, E#2, F2, F#2, G2, G#2, A2, A#2, B2, B#2, C3), and the second line shows the descending chromatic scale (C3, B#2, B2, A#2, A2, G#2, G2, F#2, F2, E#2, E2, D#2, D2, C#2, C2). The piece concludes with a whole rest.